

This document details the steps required to update your Soilmoisture Equipment Corporation's (SEC) HandiTrase TDR soil moisture meter. Obtain the latest **HandiTrase Update** from our website at: <http://www.soilmoisture.com/HandiTrase-TDR/>

The whole process takes just a couple of minutes, but please be sure to have a decent (> %25) battery charge before you start. Please reboot the device to start fresh.

Backup your data if you want it. It's Now or Never, because we are going to delete the Database to make room for a bigger one. However, we are going to reload your old data back into the new database.

1. To back up your data, start your original HandiTRASE app, and press on View Data, swipe from the left side of the screen to the right to open up the Export menu. From there select All Data with plots, and give it a file name that makes sense to you and press save. Depending on how much data you have it could take some time (a minute or so) It will store the backed-up data into a .CSV file in the Export folder of the HandiTrase folder on the Android device.
2. Open the Android File Manager app, press All, HandiTRASE, Export, to verify that your new data back up file is there. If not, repeat the above steps until you have it. Press the bottom left arrow key until the File Manager is closed.

Deleting the original (Old) database:

3. Reopen the File Manager and press All, HandiTRASE, DB, and select the ht.db file. Open the control menu on the bottom left of the File Manager (with 3 dots) and Delete your selected ht.db selection! Your old Database has been deleted! Press the bottom left arrow key until the File Manager is closed.

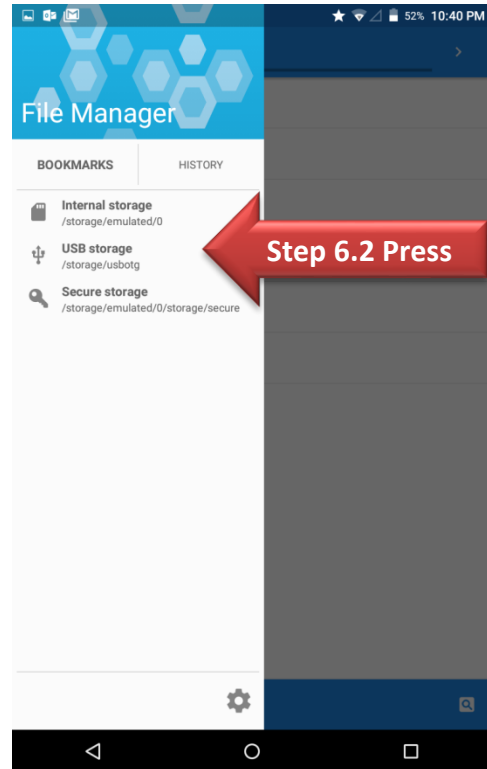
Delete the old APP!

4. Press the Search Apps button (White circle with 6 dots in it) just above the lower center (Home) button. Find the old HandiTrase app and drag it up to **Uninstall it!** (Do not just remove it, you must completely uninstall it)

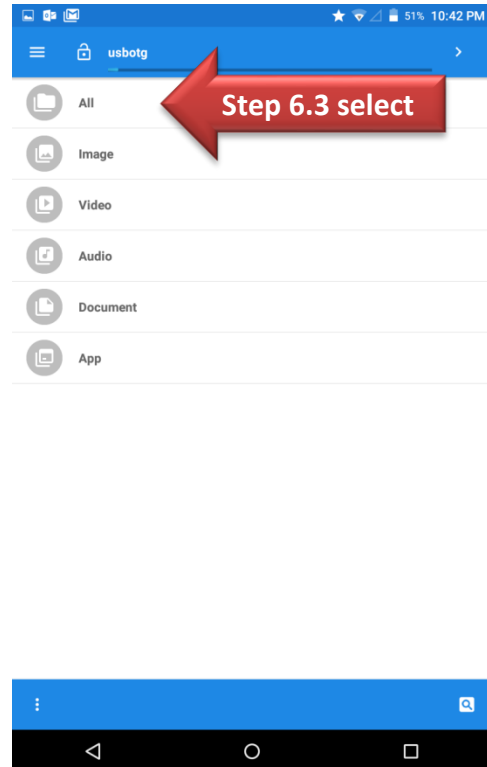
Install the new App!

5. Open the file Manager again
 6. Unzip the downloaded .APK file and copy it to the **HandiTrase** folder on your HandiTrase using the built-in Android file Manager, or with your windows manager if you connected it with the supplied USB-Micro-B cable.
- 6.1 To do this we will show you how to Copy/Transfer the file via the USB cable from your PC, or from a USB-A /USB Micro-B memory stick, or a Micro-SD memory card.

6.2 Insert the memory device or make the PC connection, and open the File Manager. In this example I'm using a USB STORAGE (Memory stick that works with Micro USB-B On The GO (OTG)) So I'll press the USB Storage Location.



6.3 Now we are in the USBOTG directory. Press ALL

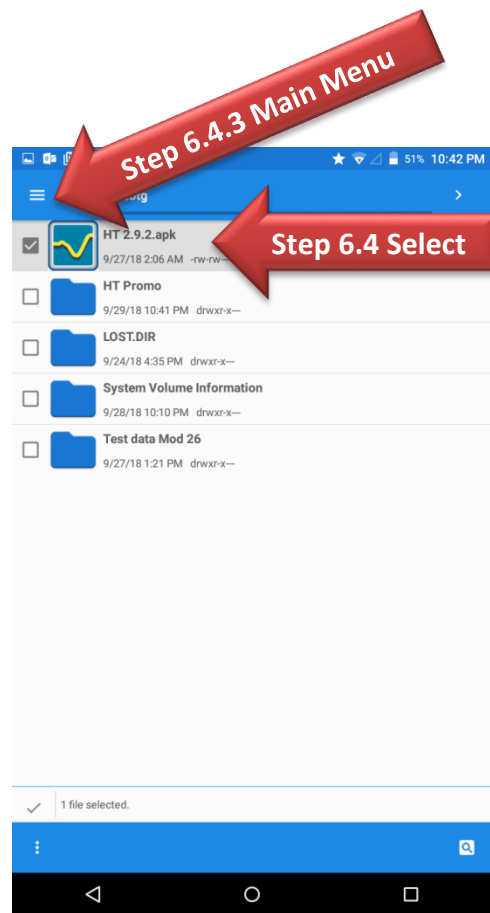


6.4 Find the HT*.*.*.APK file and **select the check box.**

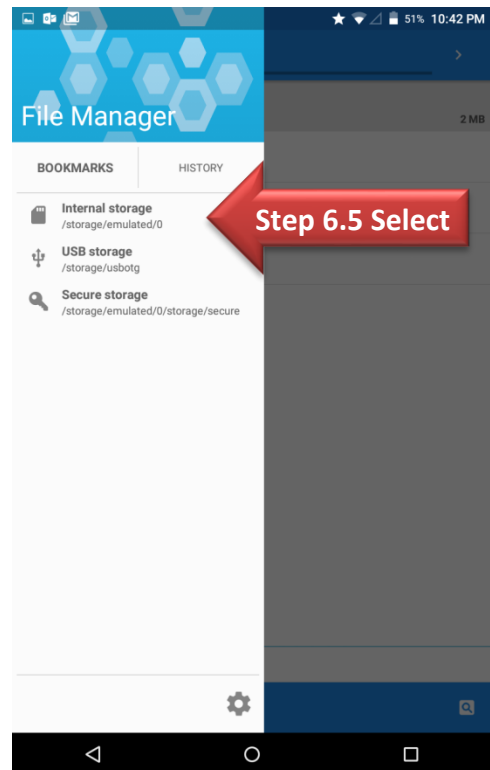
6.4.1 **DO NOT RUN or OPEN IT from here.**

6.4.2 You are only **selecting** it.

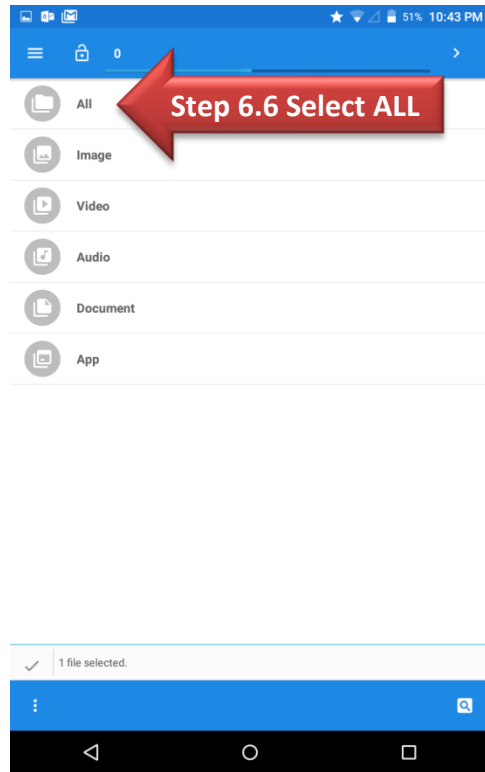
6.4.3 Last, Press the File Manager Main Menu Tab.



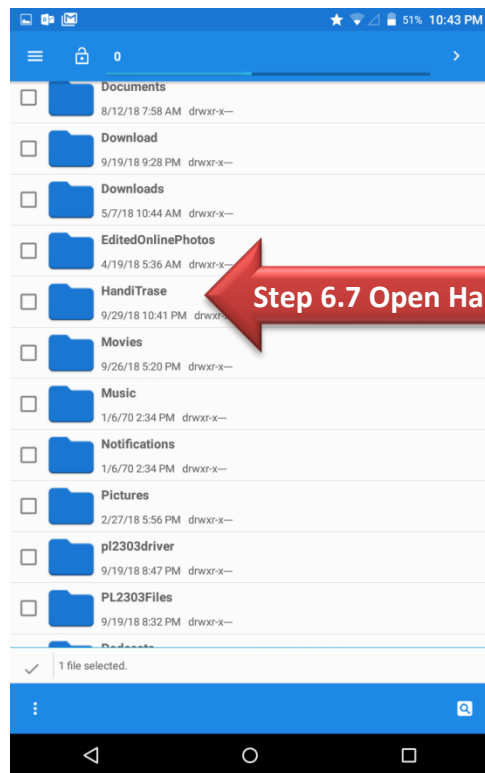
6.5 Now press the Internal storage tab.



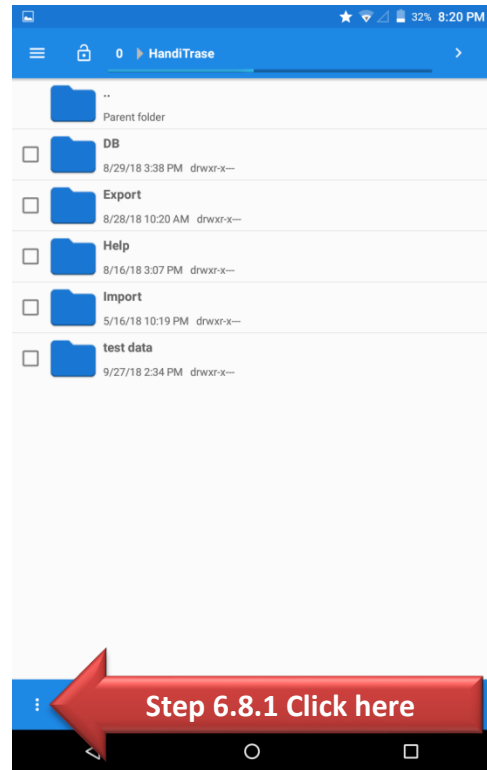
6.6 Select the ALL directory



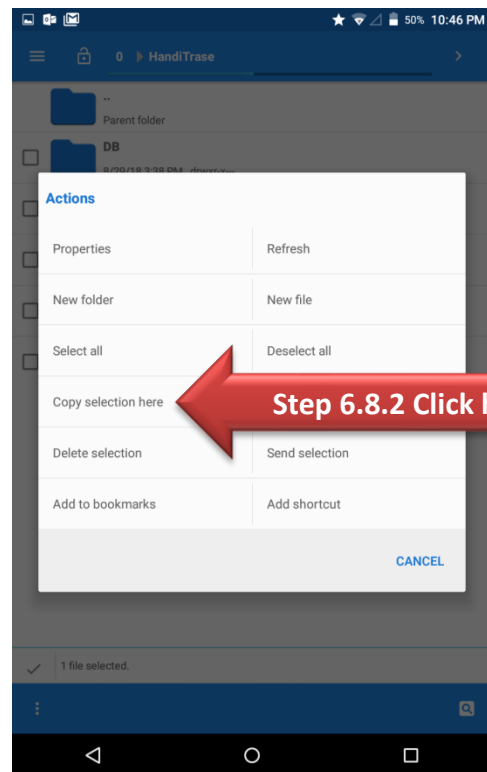
6.7 Click on HandiTrase to Open the HandiTrase folder.



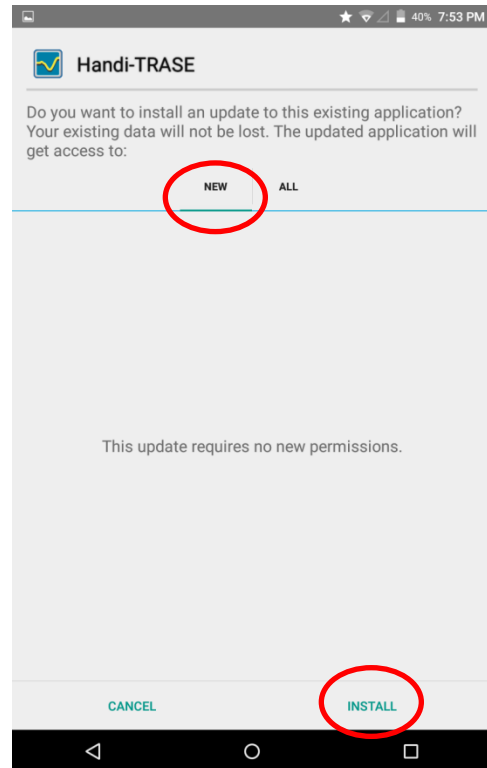
- 6.8 Once you are in the HandiTrase folder:
- 6.8.1 Click on the 3 dots on the lower left corner and the Actions dialog box will open.



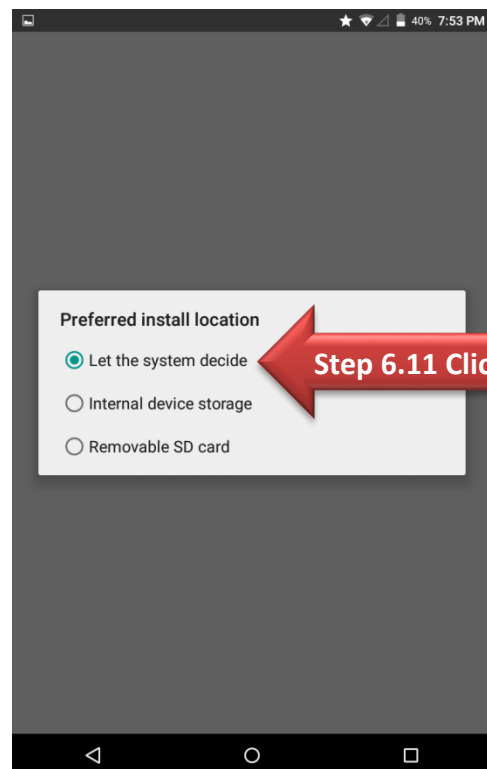
- 6.8.2 Click on the “Copy Selection here” tab.



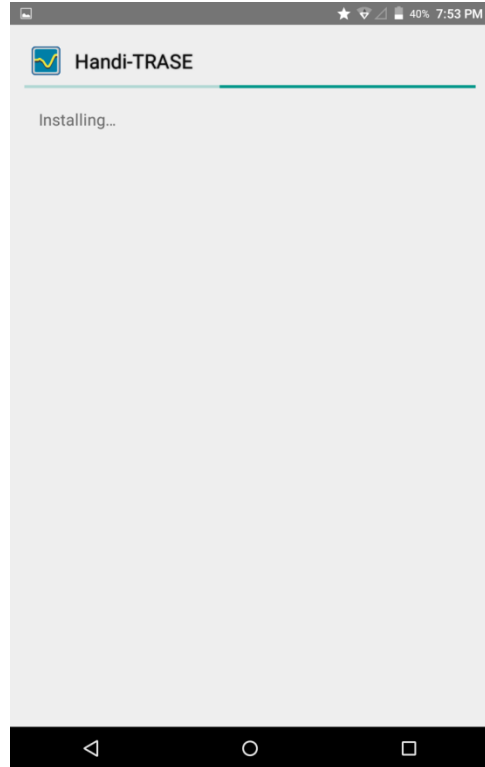
- 6.9 Click to open the #.#.#.APK file within the HandiTrase folder.
- 6.10 The operating system will ask “Do you want to install an Update to this existing application? The default NEW is underlined, please just click the bottom right button that says INSTALL.



-
- 6.11 Preferred install location? Click on the top line that states: “LET THE SYSTEM DECIDE”.



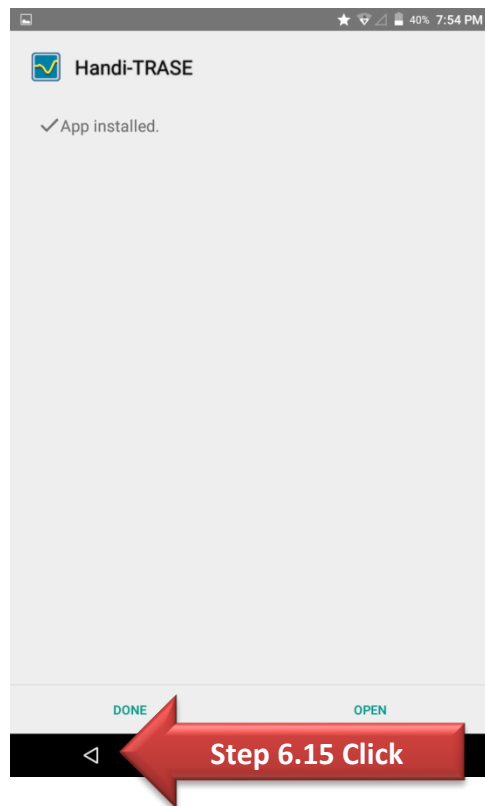
6.12 Then it will install!



6.13 Finished! (Almost)

6.14 Press DONE, and click the back button until you have exited the File Manager and are back to the Android home screen.

6.15 Open the HandiTrase program and enjoy!



Importing your old data:

7. Open the HandiTRASE app, near the bottom center press Admin Settings
 - 7.1 Press Import, then press the /.. near the top of the dialog box. That brought you up one level in the directory and now you can see the /Export folder. Press on it to find your backup data file.
 - 7.2 Press on your data file to select it and press Import. This will take a minute to properly reload the database.

8. Change the wallpaper!
 - 8.1 Our new HandiTrase units will be getting this wallpaper installed on it. The Wallpaper.jpg fill must be copied to the pictures folder to start.
 - 8.2 On the pad's home screen (center button on the bottom) long press your finger anywhere on the screen until the Wallpapers, Widgets & Settings features pop up.
 - 8.3 Select Wallpapers and locate the HT wallpaper provided and set that as the background wallpaper.
 - 8.4 Delete or remove ALL OTHER Apps from the main screen. Move them to the screen on the right of the main screen.
 - 8.5 Re-open the Apps button and drag the new HandiTrase app onto the home screen and place it as shown.

